

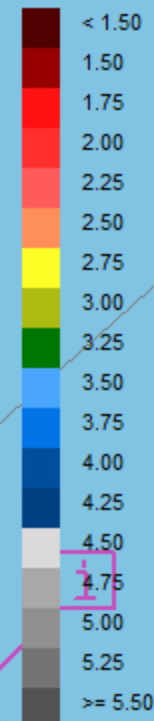
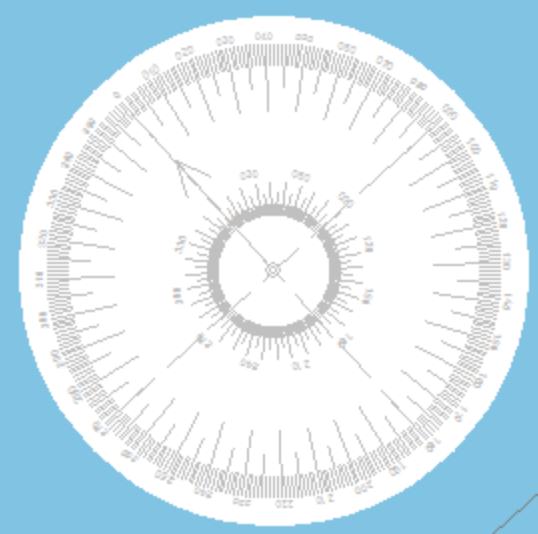
4844000Y

312000X

4843000Y

313000X

4842000Y



4844000Y

311000X

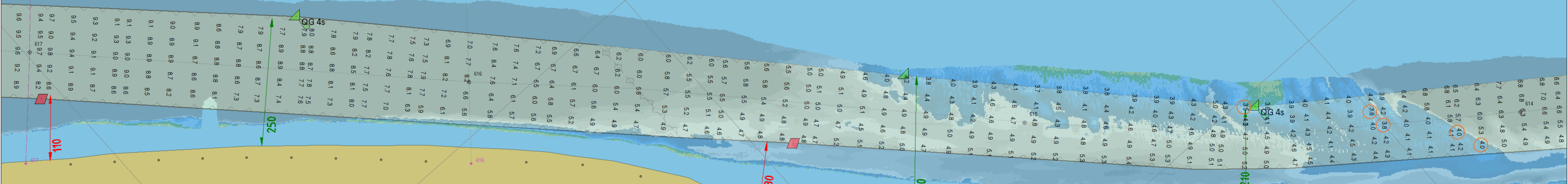
DUNAREA

DUNAREA

Calnovat

0 km

514



QG 4s  
77 89 89 84 74  
79 87 86 87 73  
79 87 88 86 73

252

08

052

QG 4s  
39 42 38 42 43  
39 40 46 47 53  
39 39 42 46 47

012

011

<b>ROMANIA</b>		F2-PO-8.5.1-06	
Ministerul Transporturilor si Infrastructurii			
Administratia Fluviala a Dunarii de Jos R.A. Galati			
Sectia Cai Navigabile - Giurgiu			
Birou Hidrotehnic, Harta Electronica			
Sondaj efectuat de	DONARIS 3	Proiect	Sondaj control
Zona	km614-km 617	Observatii:	
Mira de referinta	Corabia	Calnovat amonte	
Cota mira	+92 cm		
Data sondaj	09.08.2023		
Scara	1:5000		
Sist. coordonate	UTM -35N	Latime minima senal	140 m

- EV 3.5
- IV 3.8
- C 3.8
- IR 4.0
- R 4.0

Adancimi minime efective

311000X

4843000Y

312000X

4842000Y

313000X