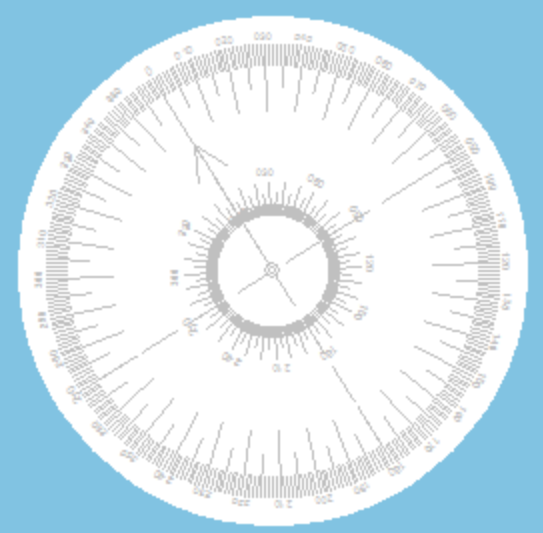
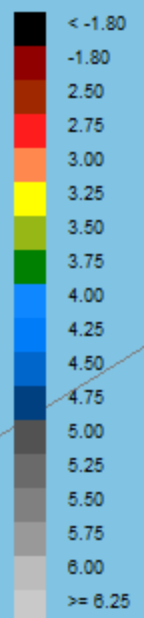


4903000Y

160000X

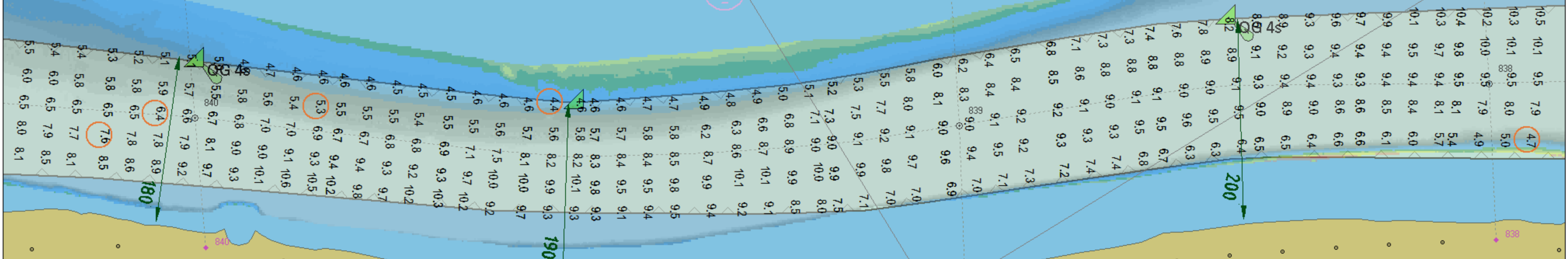
161000X

4902000Y



DUNAREA

VRAV



ROMANIA		F2-PO-8.5.1-06		
Ministerul Transporturilor si Infrastructurii Administratia Fluviala a Dunarii de Jos R.A. Galati Sectia Cai Navigabile - Giurgiu Birou Hidrotehnic, Harta Electronica				
Sondaj efectuat de	Donaris 3	Proiect	Sondaj control	EV 4.4 IV 5.3 C 6.4 IR 7.6 R 4.7
Zona	km838-km 840	Observatii:	Sondaj Garla Mare	
Mira de referinta	Gruia			
Cota mira	+172 cm			
Data sondaj	23.01.2025			
Scara	1:5000			
Sist. coordonate	UTM -35N	Latime minima senal	130 m	

160000X

4902000Y